



54790 Grand River Avenue, New Hudson MI. 48165
Phone: 248-573-4934
www.icomnorthamerica.com
email: info@icomnorthamerica.com

The ICOM JTG® II Bi Fuel Propane Liquid Injection System is EPA Certified for the 2011 to 2018 Ford 3.5L and 3.7L port injection and 2012 to 2017 Ford 5.0L F150. ICOM has the industry leading EPA Certified vehicle platforms with over 1000 to date.

Go Green and Dramatically Reduce Fuel Costs!



EPA Certified



Optional - ICOM's 'Propane Optimization Program' (POP) eliminates driver input to maximize propane usage

The patented ICOM JTG® II Propane Liquid Injection System is innovative and offers these advantages:

- Nationwide Installation and Service
- Equal power, torque and drivability of gasoline
- Cold climate reliability
- Reduces greenhouse gas emissions by up to 20%
- Dramatically reduced emissions
- Virtually no particulates
- Fuel range extended with the use of bi-fuel
- Extended service intervals
- Vehicle warranty remains in effect

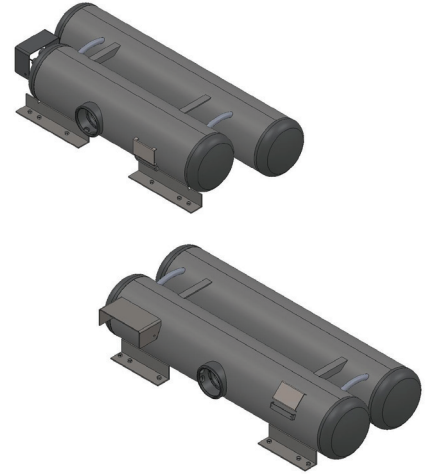
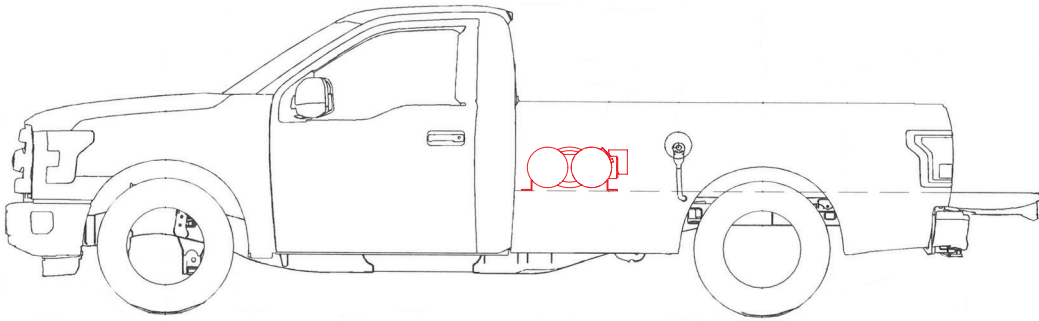


Fuel Tank Options:

12 x 60 - 12 x 48 Under Tool Box In Bed Fuel Tank (Short Bed) - 38 USG

12 x 12 x 60* Under Tool Box In Bed Fuel Tank (Long Bed) - 42 USG

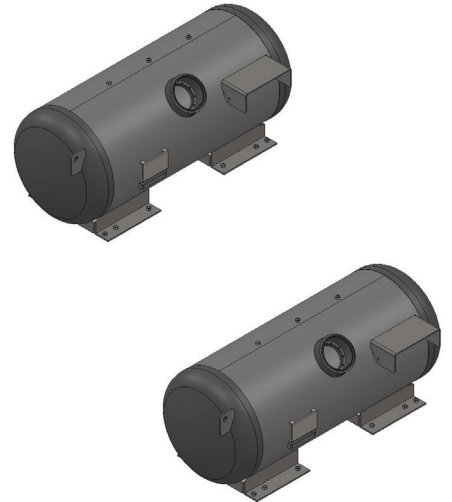
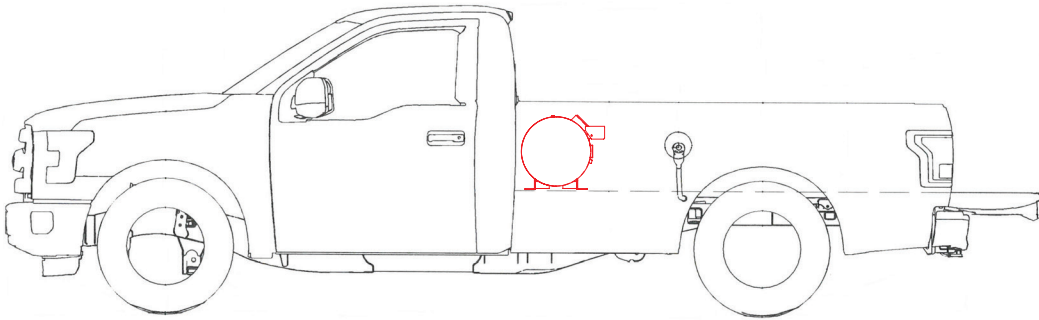
**Note - Not available for 2015 and newer*



20 x 50 In Bed Fuel Tank (Short Bed) - 48 USG

20 x 60* In Bed Fuel Tank (Long Bed) - 57 USG

**Note - Not available for 2015 and newer*



14 x 14 x 31 Under Vehicle Fuel Tank - 28 USG

720 x 270 Under Vehicle Toroidal Fuel Tank - 19 USG

