



54790 Grand River Avenue, New Hudson MI. 48165

Phone: 248-573-4934

www.icomnorthamerica.com

email: info@icomnorthamerica.com

The ICOM JTG® II Bi Fuel Propane Liquid Injection System is EPA Certified for the Ford 6.8L and 7.3L F53 & F59 chassis.

Go Green and Dramatically Reduce Fuel Costs!



Optional - ICOM's 'Propane Optimization Program' (POP) eliminates driver input to maximize propane usage

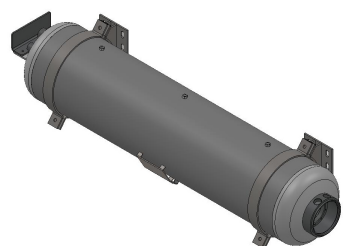
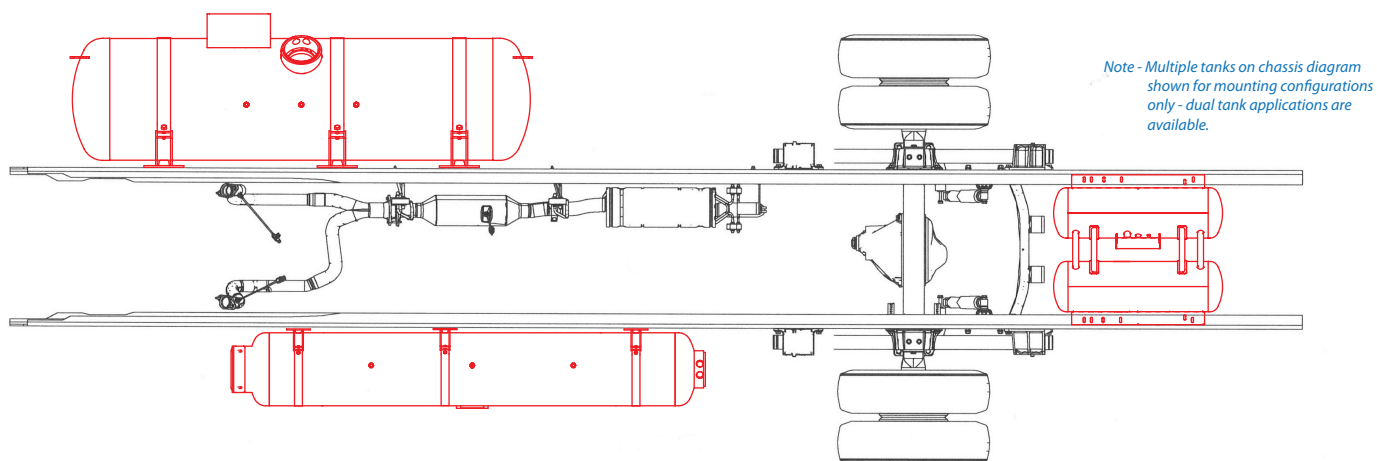
The patented ICOM JTG® II Propane Liquid Injection System is innovative and offers these advantages:

- Nationwide Installation and Service
- Equal power, torque and drivability of gasoline
- Cold climate reliability
- Reduces greenhouse gas emissions by up to 20%
- Dramatically reduced emissions
- Virtually no particulates
- Fuel range extended with the use of bi-fuel
- Extended service intervals
- Vehicle warranty remains in effect

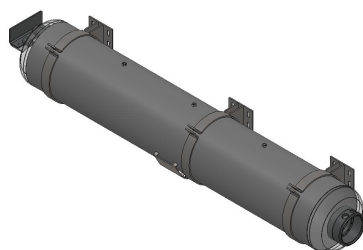


EPA Certified

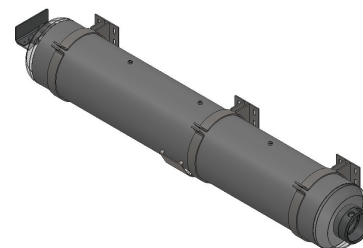
Fuel Tank Configurations & Sizes:



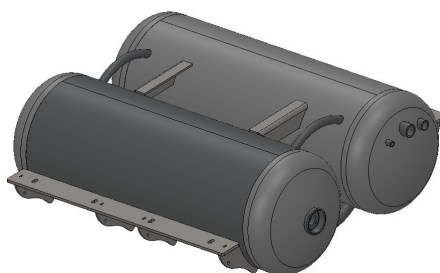
13 x 60 Fuel Tank - 25 USG



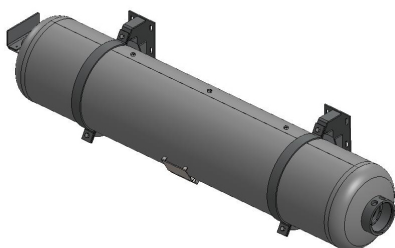
13 x 80 Fuel Tank - 33.5 USG



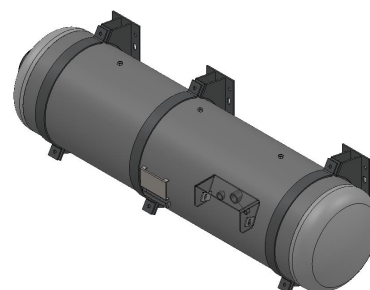
13 x 92 Fuel Tank - 38.5 USG



16 x 16 x 47 Fuel Tank - 57 USG



16 x 80 Fuel Tank - 50 USG



18 x 70 Fuel Tank - 55 USG

*** Contact ICOM for special tank and dual fuel tank applications**