



54790 Grand River Avenue, New Hudson MI. 48165

Phone: 248-573-4934

[www.icomnorthamerica.com](http://www.icomnorthamerica.com)

email: [info@icomnorthamerica.com](mailto:info@icomnorthamerica.com)

**The ICOM JTG® II Bifuel & Monofuel Propane Liquid Injection System is EPA Certified for the 2011 to 2018 Ford 6.8L F750. ICOM has the industry leading EPA Certified vehicle platforms with over 1000 to date.**

*CARB 2018 TBD*

***Go Green and Dramatically  
Reduce Fuel Costs!***



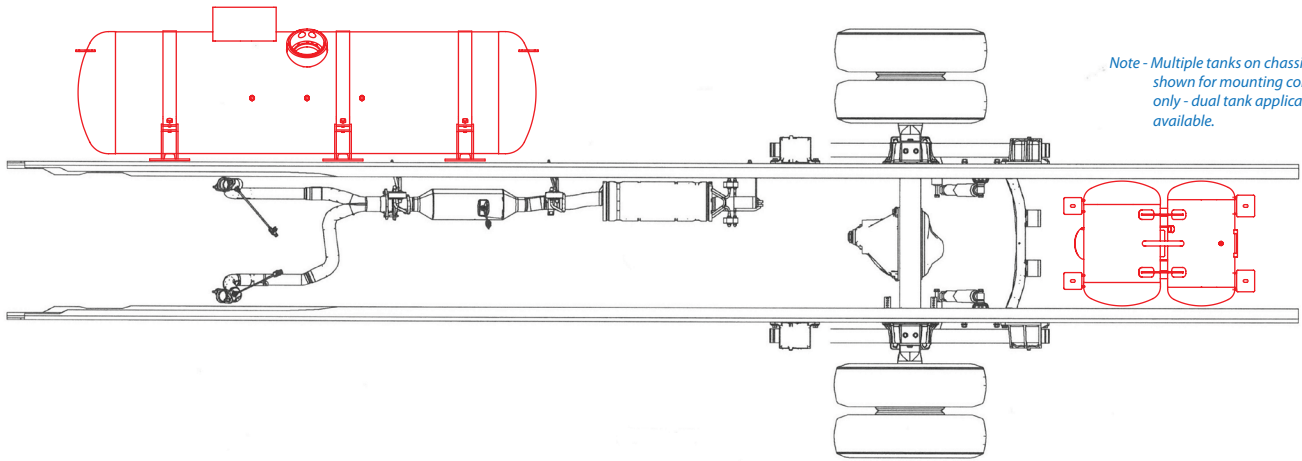
**Optional - ICOM's 'Propane Optimization Program' (POP) eliminates driver input to maximize propane usage**

**The patented ICOM JTG® II Propane Liquid Injection System is innovative and offers these advantages:**

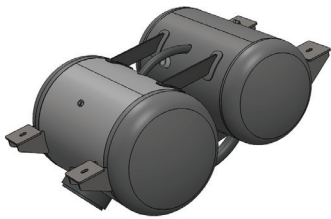
- Nationwide Installation and Service
- Equal power, torque and drivability of gasoline
- Cold climate reliability
- Reduces greenhouse gas emissions by up to 20%
- Dramatically reduced emissions
- Virtually no particulates
- Fuel range extended with the use of bi-fuel
- Extended service intervals
- Vehicle warranty remains in effect



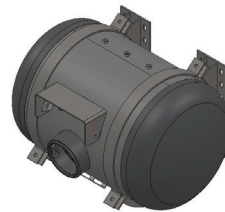
## Fuel Tank Configurations & Sizes:



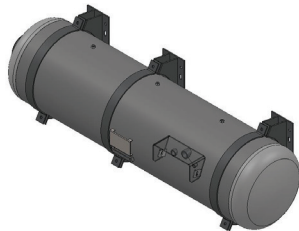
Note - Multiple tanks on chassis diagram shown for mounting configurations only - dual tank applications are available.



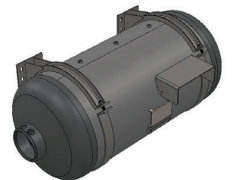
14 x 16 x 26 Fuel Tank - 27 USG



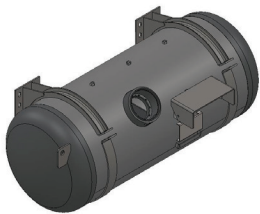
20 x 32 Fuel Tank - 29 USG



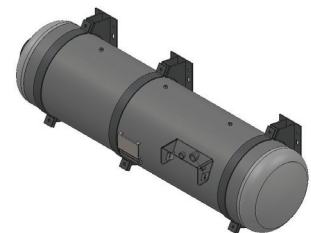
18 x 70 Fuel Tank - 55 USG



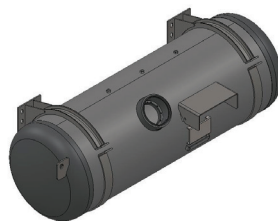
20 x 44 Fuel Tank - 41 USG



20 x 50 Fuel Tank - 48 USG



20 x 75 Fuel Tank - 73 USG



20 x 60 Fuel Tank - 57 USG

**\* Contact ICOM for special tank and dual fuel tank applications**