



54790 Grand River Avenue, New Hudson MI. 48165  
Phone: 248-573-4934  
www.icomnorthamerica.com  
email: info@icomnorthamerica.com

**The ICOM JTG® II Bi Fuel Propane Liquid Injection System is EPA Certified for the 2011 to 2014 Chevy Silverado / GMC Sierra 4.8L & 5.3L engine and 2015 to 2019 Chevy Vans & Pickups 2500/3500 4.8L & 6.0L engine. ICOM has the industry leading EPA Certified vehicle platforms with over 1000 to date.**



**Go Green and Dramatically Reduce Fuel Costs!**



EPA Certified

**Optional - ICOM's 'Propane Optimization Program' (POP) eliminates driver input to maximize propane usage**

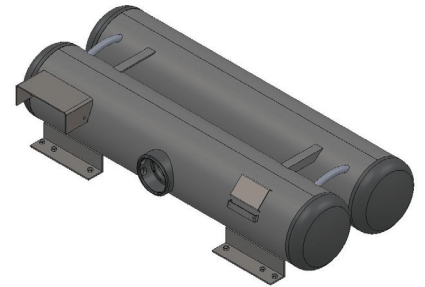
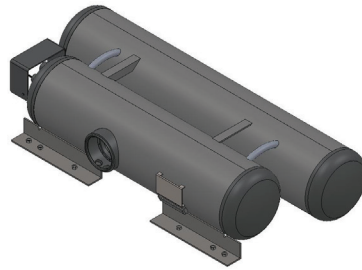
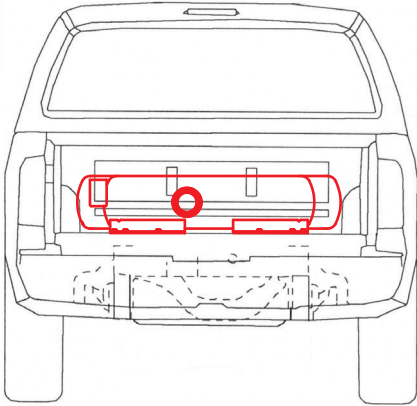
**The patented ICOM JTG® II Propane Liquid Injection System is innovative and offers these advantages:**

- Nationwide Installation and Service
- Equal power, torque and drivability of gasoline
- Cold climate reliability
- Reduces greenhouse gas emissions by up to 20%
- Dramatically reduced emissions
- Virtually no particulates
- Fuel range extended with the use of bi-fuel
- Extended service intervals
- Vehicle warranty remains in effect

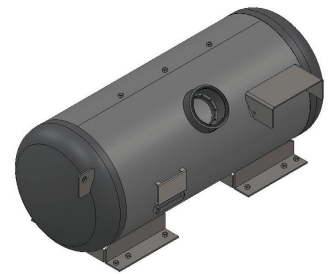
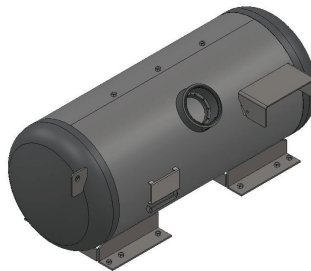
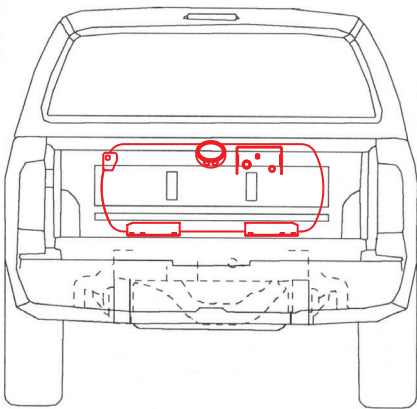


## Fuel Tank Options:

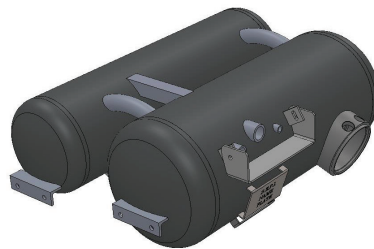
12 x 60 - 12 x 48 Under Tool Box In Bed Fuel Tank (Short Bed) - 38 USG  
12 x 12 x 60 Under Tool Box In Bed Fuel Tank (Long Bed) - 42 USG



20 x 50 In Bed Fuel Tank (Short Bed) - 48 USG  
20 x 60 In Bed Fuel Tank (Long Bed) - 57 USG



10 x 35 - 13 x 33 Under Vehicle  
Fuel Tank - 22 USG



720 x 270 Under Vehicle  
Toroidal Fuel Tank - 19 USG

