



54790 Grand River Avenue, New Hudson MI. 48165  
Phone: 248-573-4934  
[www.icomnorthamerica.com](http://www.icomnorthamerica.com)  
email: [info@icomnorthamerica.com](mailto:info@icomnorthamerica.com)

**The ICOM JTG® II Mono Fuel Propane Liquid Injection System is EPA Certified for the Ford 3.5L and 3.7L Transit Wagon / Van.**

***Go Green and Dramatically Reduce Fuel Costs!***



**The patented ICOM JTG® II Propane Liquid Injection System is innovative and offers these advantages:**

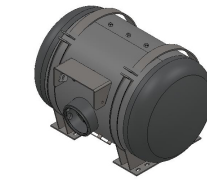
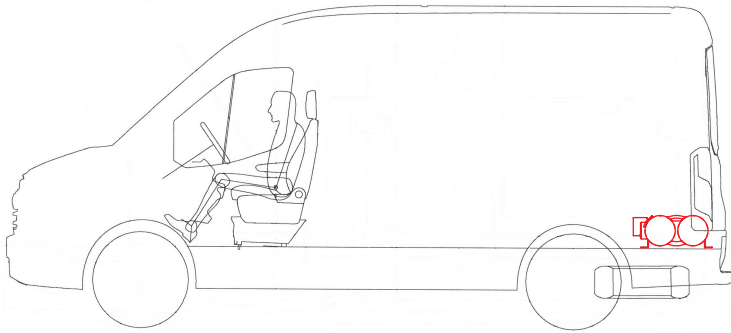
- Nationwide Installation and Service
- Equal power, torque and drivability of gasoline
- Cold climate reliability
- Reduces greenhouse gas emissions by up to 20%
- Dramatically reduced emissions
- Virtually no particulates
- Extended service intervals
- Vehicle warranty remains in effect



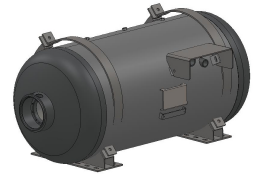
EPA Certified

# Fuel Tank Configurations and Sizes:

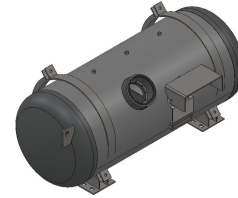
## 1) In-Vehicle Tank Options:



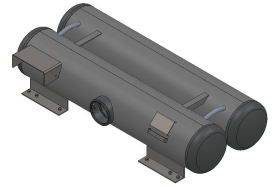
20 x 32 Fuel Tank - 29 USG



20 x 44 Fuel Tank - 41 USG

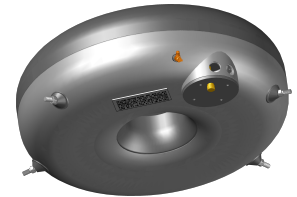
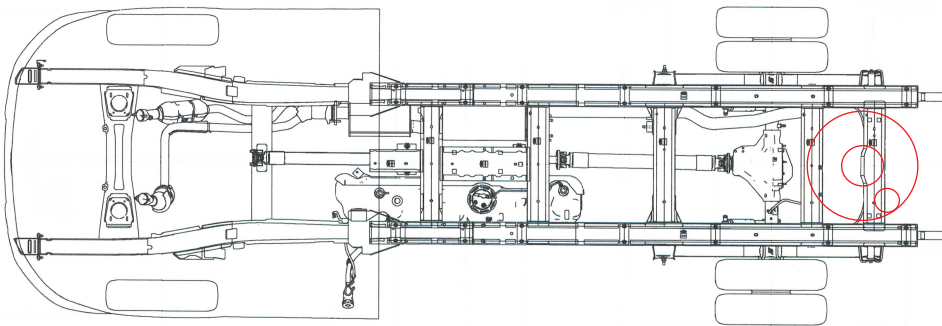


20 x 50 Fuel Tank - 48 USG



12 x 12 x 60 Fuel Tank - 42 USG

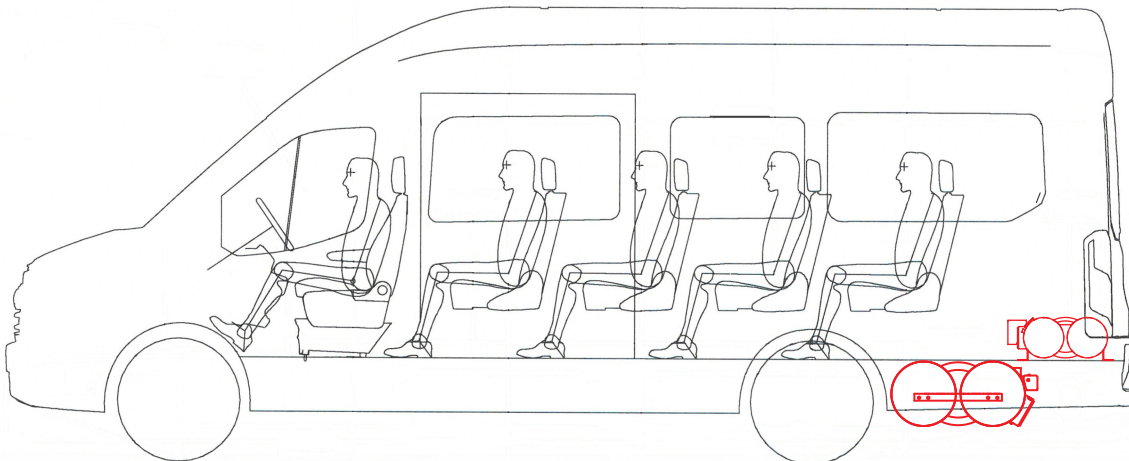
## 2) Frame Mount Options:



720 x 270 Fuel Tank\* - 19 USG

*\*Note - ICOM trailer hitch required*

## 156" and 178" Wheelbase Wagon / Van / Cab & Chassis (Cutaway)

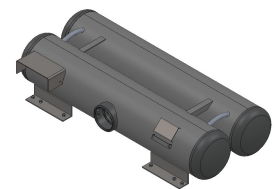


## Extended Van / 15-Passenger Wagon



14 x 14 x 31 Fuel Tank\* - 28 USG

*\*Note - ICOM trailer hitch required*



12 x 12 x 60 Fuel Tank - 42 USG

**\*Contact ICOM for special tank and dual fuel tank applications**