



54790 Grand River Avenue, New Hudson MI. 48165
Phone: 248-573-4934
www.icomnorthamerica.com
email: info@icomnorthamerica.com

The ICOM JTG® II Mono Fuel Propane Liquid Injection System is EPA Certified for the 2015 to 2019 Ford 3.7L Transit Wagon / Van. ICOM has the industry leading EPA Certified vehicle platforms with over 1000 to date.

***Go Green and Dramatically
Reduce Fuel Costs!***



EPA Certified

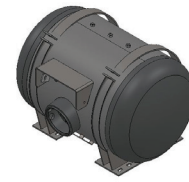
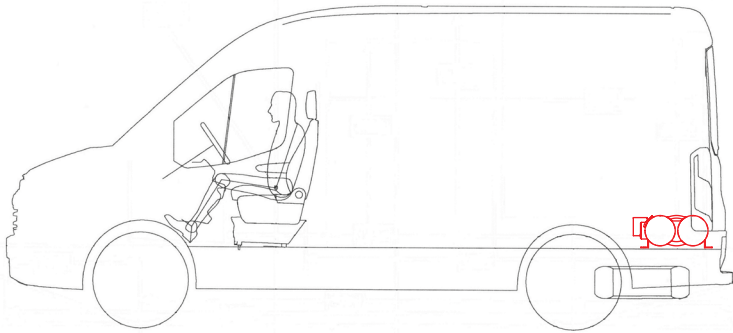
The patented ICOM JTG® II Propane Liquid Injection System is innovative and offers these advantages:

- Nationwide Installation and Service
- Equal power, torque and drivability of gasoline
- Cold climate reliability
- Reduces greenhouse gas emissions by up to 20%
- Dramatically reduced emissions
- Virtually no particulates
- Extended service intervals
- Vehicle warranty remains in effect

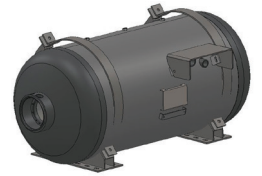


Fuel Tank Configurations and Sizes:

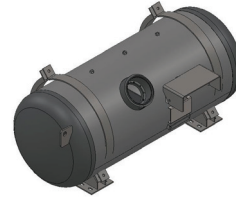
1) In-Vehicle Tank Options:



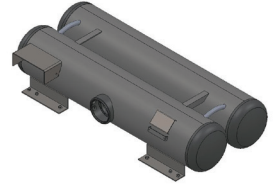
20 x 32 Fuel Tank - 29 USG



20 x 44 Fuel Tank - 41 USG

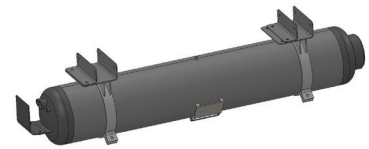
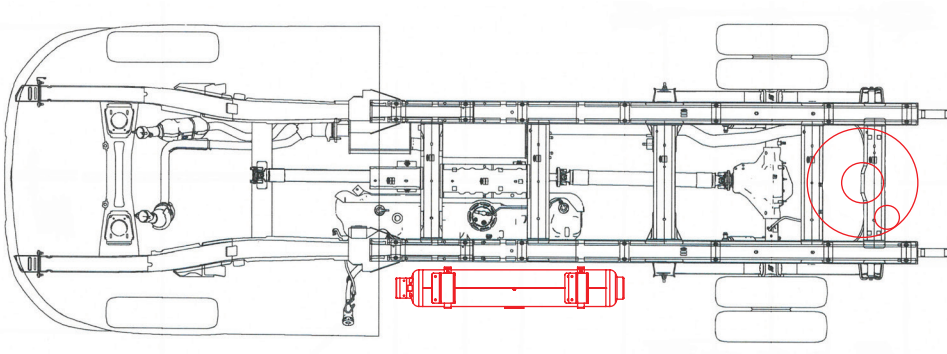


20 x 50 Fuel Tank - 48 USG



12 x 12 x 60 Fuel Tank - 42 USG

2) Frame Mount Options:



12 x 57 Fuel Tank* - 20 USG

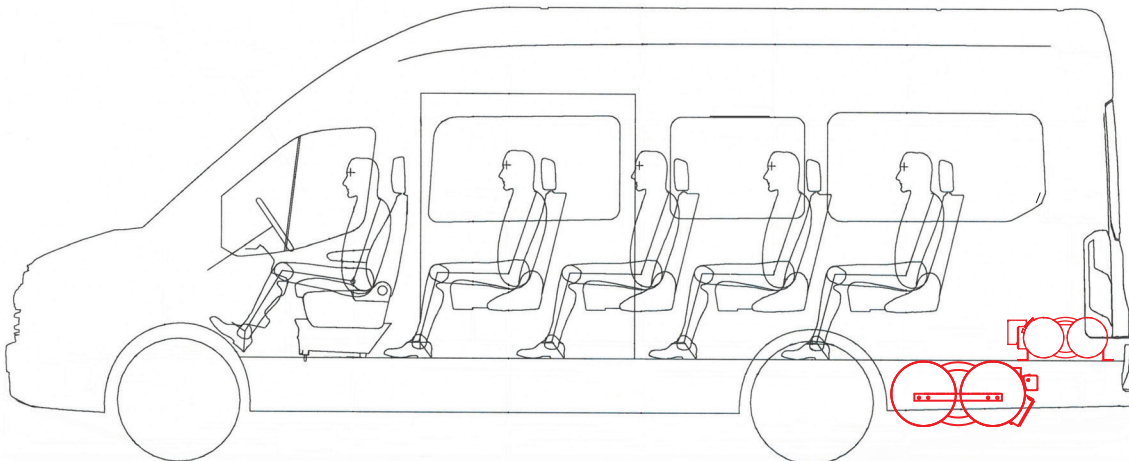
*Note - Available only for Cab & Chassis (Cutaway) vehicles



720 x 270 Fuel Tank* - 19 USG

*Note - ICOM trailer hitch required

156" and 178" Wheelbase Wagon / Van / Cab & Chassis (Cutaway)

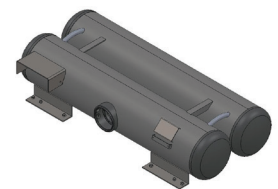


Extended Van / 15-Passenger Wagon



14 x 14 x 31 Fuel Tank* - 28 USG

*Note - ICOM trailer hitch required



12 x 12 x 60 Fuel Tank - 42 USG

*** Contact ICOM for special tank and dual fuel tank applications**